

style
with substance



For more information on
the K2 orangery collection,
please visit
www.thek2collection.co.uk

Copyright © 2012 K2 Conservatories.
All rights reserved. No part of this document may be
reproduced, amended or extracted.

K2 Conservatories is a division of Synseal Extrusions Ltd.

S/C: COLORAB MAY12

the 
orangery
collection

capella • integra • rio • venetian



the capella

the integra

the rio

the venetian

For those wanting a little more than a conservatory, the orangerie is the ideal solution.

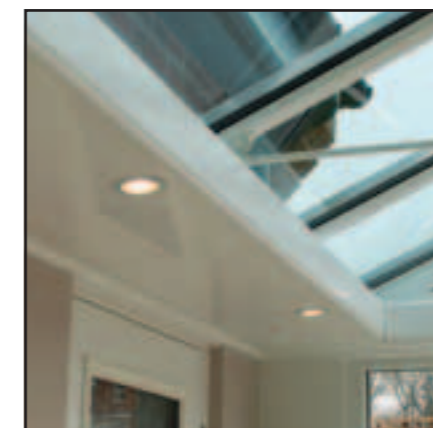
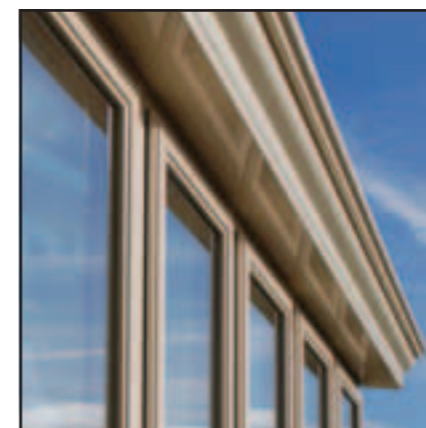
Originally designed to house and grow exotic fruits and plants, orangeries became a symbol of wealth and status.

Nowadays they provide a beautiful alternative to the traditional conservatory.

Designed with solid build columns, a partial solid ceiling, and the inclusion of a roof light, they are a well balanced mix of traditional build extensions and conservatories.

This choice of style ensures that the room forms, and feels like, an integral part of the home, blending light with reassuring sturdiness.

K2 have introduced key orangerie systems utilising the K2 roof, to meet the requirements of a range of tastes and budgets.



the capella

Ideal for those who are looking for something truly different but want to retain a full glass roof, the Capella also allows you to upgrade an existing conservatory to give it that orangery look.

The design drastically improves the external appearance of a standard conservatory, thanks to the aluminium high fronted gutter which hides the roof bars.

On the inside an eye-catching internal soffit allows the inclusion of down-lights or speakers, giving you a unique and highly novel appearance that will be the envy of your neighbours.

Thanks to retaining the build specifications of a conservatory, no planning permission is required for the installation of a roof fitted with the Capella system.

the  orangery
collection



the integra

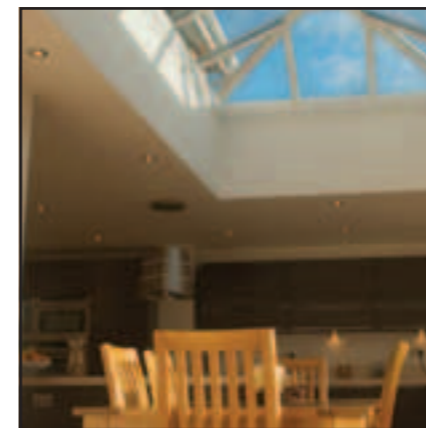
A classic and sturdy brick built orangery, the Integra design is supported inside the cavity wall.

The system features a "warm roof" construction that meets the latest building standards regulations. High strength aluminium replaces traditional timber, and the wide aluminium gutter replaces traditional flat roof membranes.

The strength of the construction means that the gutter can be safely walked on for maintenance purposes.

Internally you have a deep plasterboard soffit for that unique orangery look, also allowing you to integrate downlights and speakers.

the  orangery
collection



the rio

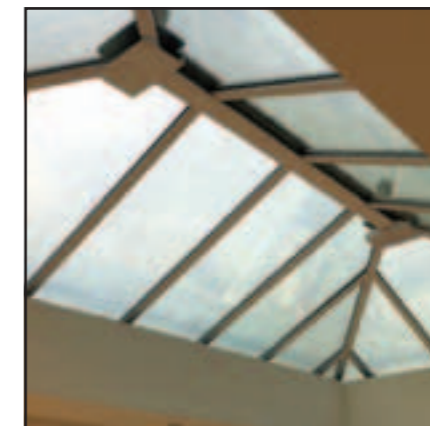
The Rio style that can be created with the K2 orangery system is one of the most popular.

With its flat roof it looks strikingly different from the outside, with the lantern visibly "sat" on top.

On the inside you will benefit from the same effect provided by the wide soffits, while you can remain confident that the building retains the structural integrity provided by our unique, highly versatile orangery aluminium system.

The Rio is a cost effective solution for a true orangery which makes no compromise when it comes to building standard regulations. You get a lot more than just what you see, and best of all, as for the whole range, it has been designed to ensure a fast installation, for minimum disruption.

the  orangery
collection



the venetian

The Venetian design will bring to your home the latest in contemporary orangerie style.

The roof can be entirely self-supported by the structural aluminium legs bolted down to the foundations.

This gives complete freedom of design, allowing you to opt for fully framed walls, brick work, or large bi-folds, in the knowledge that they do not support the roof.

Using the same warm roof principle as the Integra, thus meeting the latest building standards regulations, it also has a wide integrated aluminium gutter that can be safely walked on for maintenance. Decorative aluminium hoppers and downpipes are available.

On the inside you will benefit from a substantial and visually striking plastered internal soffit.

the  orangerie
collection